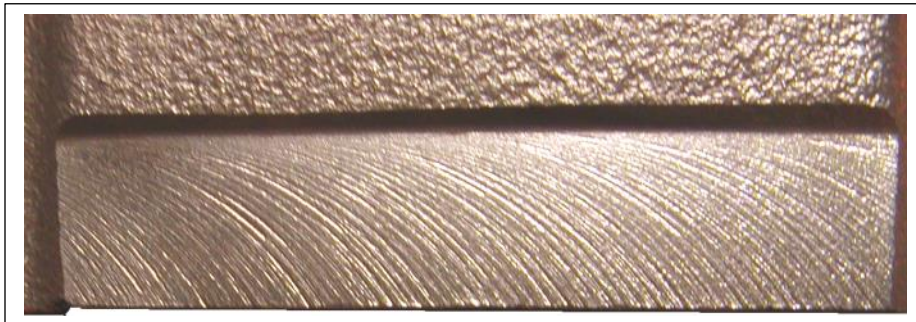


Subject: Cylinder Block VIN Pad Reference Information

Ref: CB VIN 01V0

In at least 98% of engines you should be able to see the cutter marks on the VIN pad. These marks on the pad were produced by a 10" inch diameter cutter. Even if the engine has the VIN number stamped on it the cutter marks should be visible. We have seen variations in the depth of the cutter marks. However, as stated 98% of the factory original untouched engines some cutter marks should be visible.

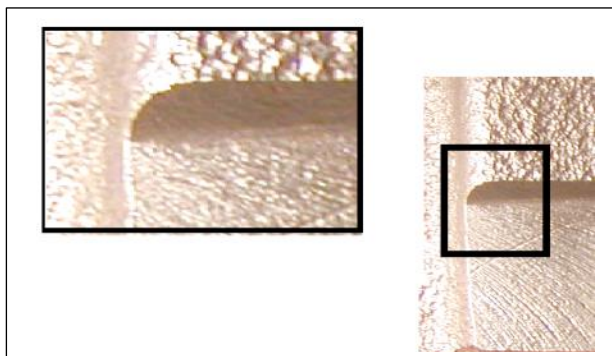
Note: Often if a block is shot peened or the VIN pad had been sanded down too many times and the cutter marks were light originally the cutter marks may get washed out and very difficult to see. Without the original cutter marks present it is often difficult to validate the engines originality.



Typical unstamped VIN pad



Light impact VIN stamp



Note: When reviewing a suspect re-stamped and ground down engine ID pad you need to review the cutter profile at the very top of the ID pad. The original factory cutter has a very distinct profile.