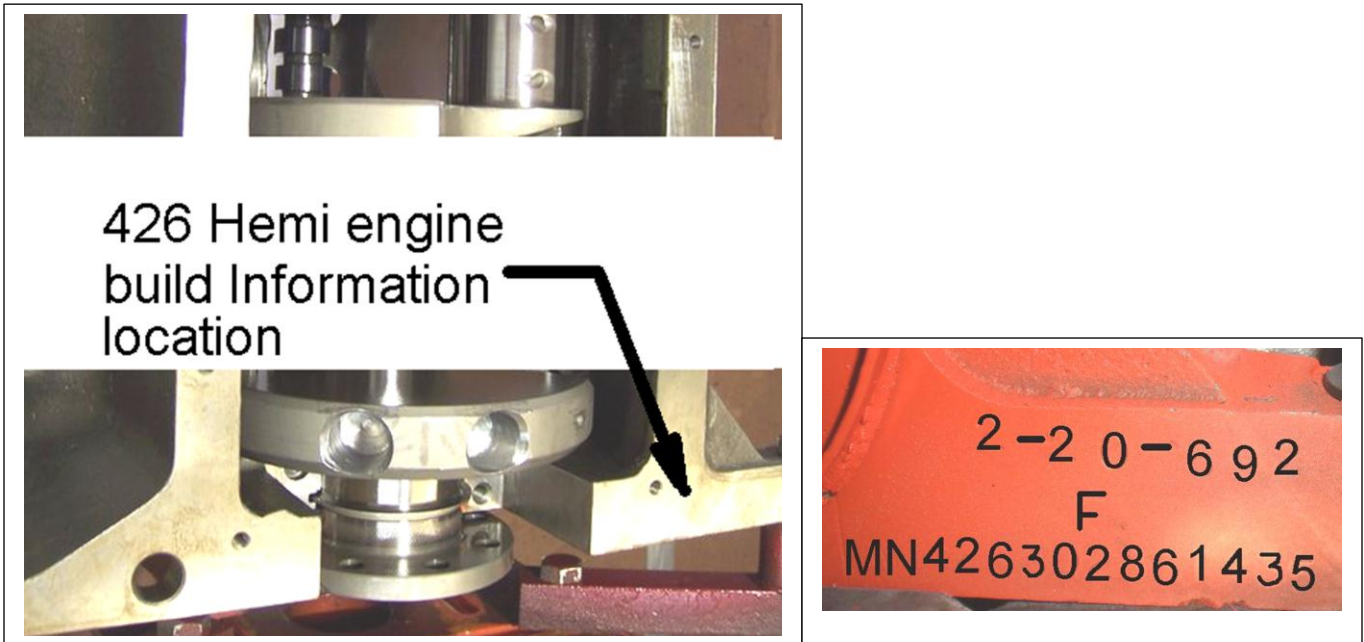


## 426 Hemi Engine Assembly Information

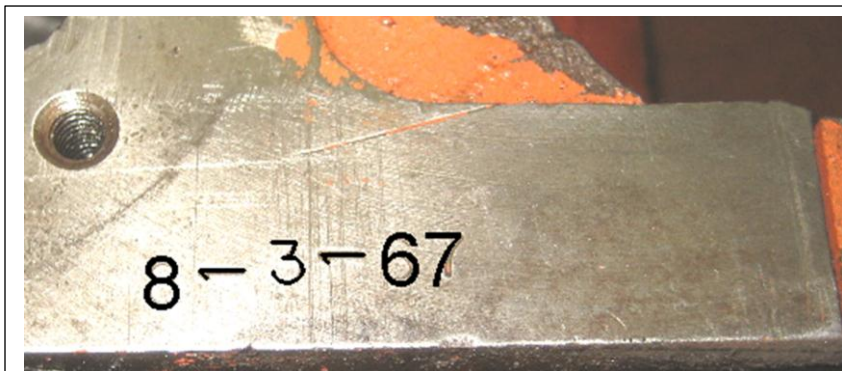
All 426 Hemi engines were cast and assembled at the Marysville Engine Plant. Assembly date information is stamped on the oil pan rail near the starter. Casting reference # **2468330**.

**Note:** We have found on very little information on pan rail area relation to the build of 1966-67 and some early 1968 engines. The extended information started in early 1968 model year production.

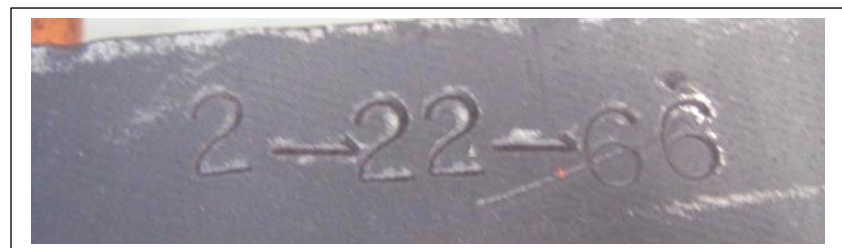


426 Hemi engine  
build Information  
location

2-20-692  
F  
MN426302861435

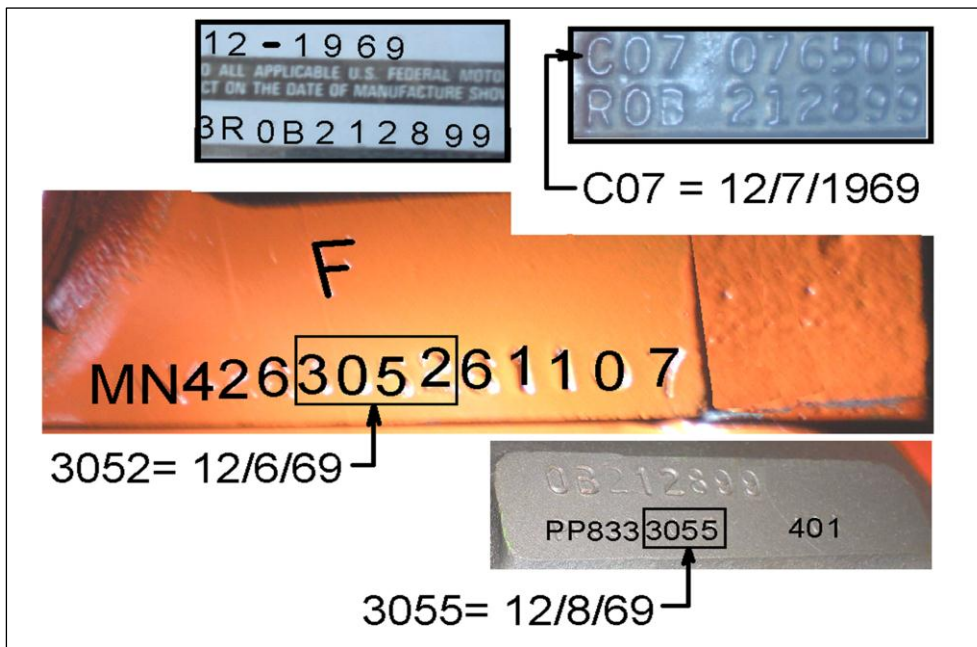


Finished machining date of 8-3-67 on oil pan rail



Finished machining date of 2-22-66 on oil pan rail

If you notice the space stamp between the month – day year were made out of the #1 stamp.



1970 E body reference

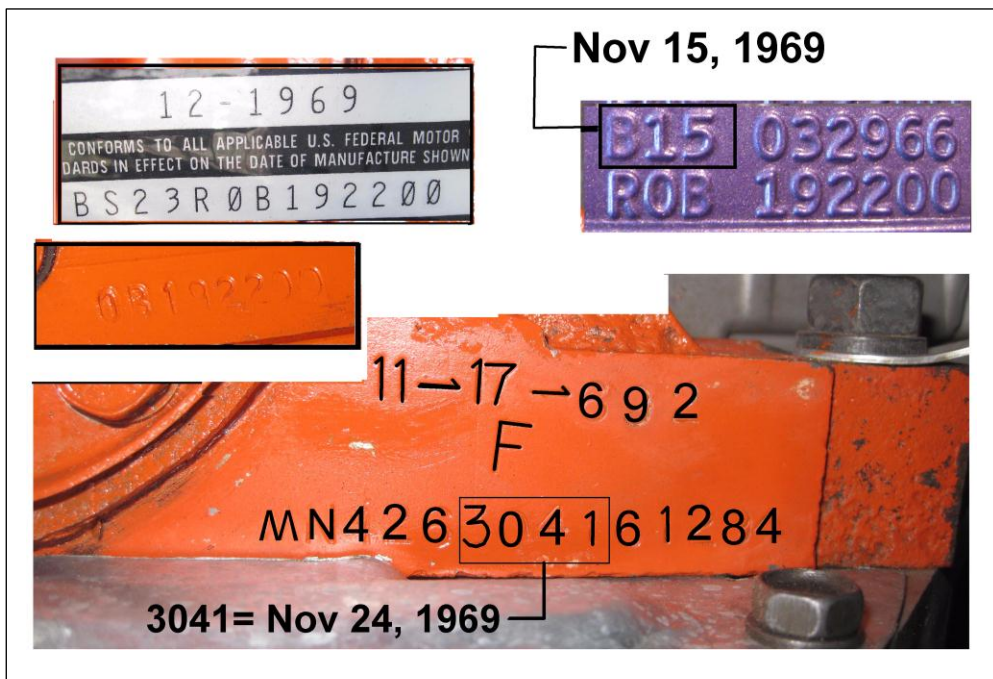
SPD:

Trim tag 12/7/1969 (C7)

Federal ID sticker 12/1969

Engine build 12/6/69

Transmission build 12/8/1969



1970 E body reference

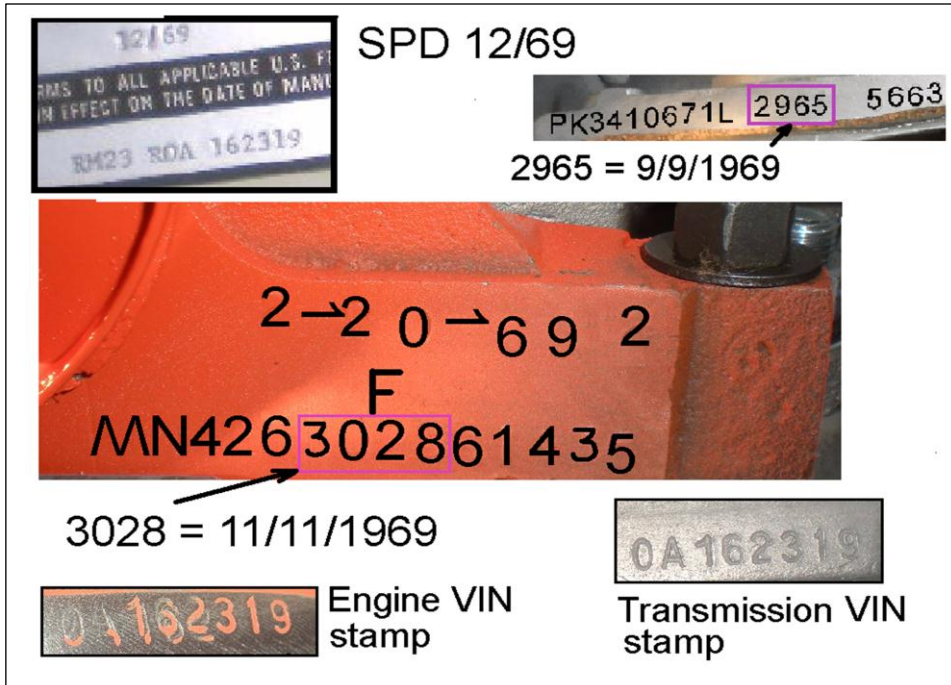
SPD:

Trim tag 11/15/1969 (B15)

Federal ID sticker 12-1969

Engine build 11-24-69

Finish machining 11-17-1969



Numbers matching 1970  
Superbird reference

SPD:  
Trim tag 11/30/1969 (B30)  
Federal ID sticker 12-1969

Engine build 11/11/1969  
Finish machining 2/20/1969  
Transmission build 9/9/1969